

Rechargeable Grease Gun



INSTRUCTION MANUAL

Please, READ this Manual Before Using!

TABLE OF CONTENTS

General Description	3
Specifications	3
Proper Use	3
Safety	3
Work Area Hazards	4
Electrical Safety	4
Personal Safety	4
Use & Care	4
Service	4
Inspection	4
Operation	4
Charger Operation	5
Normal Charging	5
Removing the Battery Pack	5
Installing the Battery Pack	5
How to Use the 12V DC Plug Adapter and Warm Blanket	5
How to use the assistant belts.....	6
How to use the dc to ac cigarette adaptor and extend cable	6
Safety Instructions for Charger & Battery	7
Removing Empty Grease Cartridge	8
Installing Grease Cartridge	8
How to Read the Battery Capacity Display	8
How to Use the Self-Locking Trigger	8
How to Fill the Gun from a Bulk Container	9
How to Fill the Gun with a Filler Pump	9
How to Expel Air Pockets	9
Assembly and Maintenance Notes	10
Service Parts & Diagrams	10-11
Troubleshooting	11

GENERAL DESCRIPTION

This Rechargeable Grease Gun is a fully automated, battery powered grease gun developed for manual lubrication of grease points. It includes a pressure relief valve to expel excessive pressure (6000 psi) in the case of a blocked bearing, fitting, or lubrication line.

This Rechargeable Grease Gun is driven by a small, low voltage electric motor connected to a three-stage planetary gear reducer. The rotary motion of the motor is converted into a reciprocating motion of the plunger through an eccentric and yoke mechanism. This Rechargeable Grease Gun is a positive displacement single acting pump.

SPECIFICATIONS

RECHARGEABLE GREASE GUN

Operating Power	12 V
Maximum Operating Pressure	6000 psi
Grease Reservoir Capacity	14.5 oz
Operating Temperature Range	-18°C to +50°C
Operating Current	4 A
Grease Output	2.6 oz @ 1000 psi
Weight	3.15 kg

ACCESSORIES

Output	12 VDC
Capacity	1700 mAh

BATTERY CHARGER

Charge Time	2 hours
Output	12 VDC
Input	120v, 60Hz VAC
Input	220V, 50Hz VAC

OUTLET HOSE

Pressure Rating	6000 psi
Hose Length	30 inches (750 mm)

PROPER USE

This Rechargeable Grease Gun was exclusively designed to pump and dispense lubricant using 12V battery power. The maximum specification ratings should not be exceeded. Any other use not in accordance with these instructions will result in loss of claim for warranty or liability.

SAFETY

Carefully read these operating instructions thoroughly before unpacking and operating this Rechargeable Grease Gun.

WARNING

- Never operate this rechargeable grease gun in an explosive atmosphere. Electric power tools can create sparks which may ignite flammable liquids, dust, or fumes.
- Do not use the battery charger in damp or wet locations.
- This grease gun can develop up to 6000 psi. Always use safety glasses and gloves for protection during operation.
- Keep hands clear of the exposed rubber portion of the hose.

WORK AREA HAZARDS

Do not operate power tools in explosive atmospheres, such as in the presence of flammable liquids, gases or dust. The Rechargeable Grease Gun can create sparks which may ignite the dust or fumes. Keep bystanders, children and visitors away during operation. Distractions can cause you to make mistakes.

ELECTRICAL SAFETY

A battery operated Rechargeable Grease Gun with a separate battery pack must be recharged only with the specified battery charger. A charger that may be suitable for one type of battery may create a risk of fire when used with another battery. Use this battery operated tool only with the specifically designed battery pack. Use of any other batteries may create a risk of fire. Batteries are shipped in an uncharged state. Charge batteries for 1.5 hours before first use.

PERSONAL SAFETY

Always wear eye protection. The Rechargeable Grease Gun can generate up to 6000 psi. Grease injection injuries are a very serious injury. Avoid accidental starting. Be sure the switch is not depressed when inserting battery pack. Do not bend the hose so that it becomes kinked.

USE & CARE

Do not continue to hold down trigger if the grease gun is stalled. This could damage the motor or cause fire. When battery pack is not in use, keep it away from other metal objects like: paper, clips, coins, keys, nails, screws or other small metal objects that can make a connection from one terminal to another. Shorting battery terminals together may cause sparks, burns, or a fire. Use only accessories that are recommended for use with the DYNALINE Rechargeable Grease Gun. This tool is a fully rated portable power lubrication product. Only accessories that are capable of handling 6000 psi should be used.

SERVICE

Service must be performed only by qualified service personnel. Service or maintenance performed by unqualified personnel may result in a risk of injury. When servicing this Rechargeable Grease Gun, use only same replacement parts. Use of unauthorized parts may create risk of injury and will void the warranty.

INSPECTION

Visually inspect for damaged, loose or missing parts. If equipment is worn or damaged, remove from service. Contact sales for damage assessment or repair.

OPERATION

Prime the Rechargeable Grease Gun after each refill or grease cartridge change. Prime the gun before using it to lubricate grease points.

CAUTION

Air pockets in the lubricant cartridge will cause the gun to lose its prime. To prime, operate the gun until grease flows from the hose. Otherwise, you can use the vent valve and the release grease valve to expel air pockets.

CHARGER OPERATION

CHARGING THE BATTERY PACK

Before using your Rechargeable Grease Gun for the first time, the battery pack should be charged for a minimum of 1.5 hours. If the battery pack is already installed in the Rechargeable Grease Gun, remove it by following the instructions under INSTALLING or REMOVING BATTERY PACK. As the battery pack approaches the discharged state, you will notice a sharp drop in tool performance. When the tool is unable to perform the task at hand, it is time to recharge the battery pack. Recharging the battery pack before this condition is reached will reduce the total work life of the pack. Discharging the pack beyond this point can damage the pack.

NOTE: Battery temperature will increase during and shortly after use. Batteries may not accept a full charge if they are charged immediately after use. Allow the battery pack to cool to room temperature before charging for best results.

CAUTION

**Vent slots in top and bottom of charger must not be obstructed.
Do not charge battery when temperature is BELOW 0°C or ABOVE 40°C.**

NORMAL CHARGING

Make sure the power circuit voltage is the same as that shown on the charger specification plate, then connect to power source.

REMOVING THE BATTERY PACK

Depress the two battery release buttons (one button on each side of battery pack) and pull the battery pack from the grease gun.

INSTALLING THE BATTERY PACK

Align battery pack with opening in handle, and push battery pack into handle until it locks into place.

HOW TO USE THE 12 VDC PLUG ADAPTER & WARM BLANKET

When the battery has been depleted and there isn't any AC outlet at reach, you can use the 12V DC Plug Adapter. Insert the plug into the 12V cigarette socket of your car. Note the 12V DC Plug Adapter is an optional part.

You can use the Warm Blanket to heat the grease in cold weather. Just wrap the grease cartridge with the Warm Blanket and insert the plug into the 12V cigarette socket of your vehicle.



AC Battery Charger



to
12V DC
cigarette
socket

12V DC Plug Adapter



Warm Blanket

HOW TO USE THE DC TO AC CIGARETTE ADAPTOR AND EXTEND CABLE

The battery has been depleted when you are working in the field, and there isn't any AC outlet at reach, you can use the DC to AC Cigarette Adaptor to recharge the battery.

Insert the DC to AC Cigarette Adaptor into the cigarette socket of your car. It can transform the DC voltage to AC voltage, you can insert the AC battery charger to recharge the battery.

NOTE: please pay attention the suitable voltage parameter.

To cigarette
socket of your
car or to the
socket of
extend cable .



DC to AC Cigarette Adaptor

To cigarette
socket of
your car



Extend Cable of Car cigarette socket

To storage battery
Note: the red clamp is to the
anode; the black clamp is to
the cathode.



Extend Cable of Storage Battery

HOW TO USE THE ASSISTANT BELTS

There are two optional assistant belts, one is the shoulder belt, one is the waist belt. It is convenient and laborsaving for the user. please consult the illustration before using the assistant belts.



SAFETY INSTRUCTIONS FOR CHARGER & BATTERY

SAVE THESE INSTRUCTIONS!! This section of the Manual contains important safety and operating instructions for the charger.

- Before using a battery charger, read all instructions and cautionary markings on the battery pack, battery charger, battery and Rechargeable Grease Gun.
- Do not expose charger to rain, snow or frost.
- Do not pull on or otherwise abuse cord. Never pull charger by the cord when disconnecting charger. Have damaged or worn power cord replaced immediately. Do not attempt to repair the power cord.
- Make sure cord is located so that it will not be stepped on, tripped over, or otherwise subjected to damage or stress.
- Do not use an extension cord unless absolutely necessary. Use of improper extension cord could result in a risk of fire and electric shock. If an extension cord must be used, make sure:

A: That the extension cord is properly wired and in good electrical condition.

B: Wire size of cord is at least as specified in the following chart:

Length of Cord in feet (m)	25 (7.5)	50 (15)	100 (30)	150 (45)
AWG Size of Cord (mm ²)	18 (1)	18 (1)	18(1)	16 (1.5)

C: If an extension cord is to be used outdoors, it must be marked with the suffix W-A following the cord type designations. For example, SJTW-A to indicate it is acceptable for outdoor use.

- Do not operate charger with a damaged cord or plug. Have the cord replaced immediately to avoid a hazard. Do not attempt to repair the power cord.
- Do not operate the charger if it has received a sharp blow, been dropped, or otherwise damaged in any way. Take it to a qualified serviceman for repair.
- Do not disassemble the charger or the battery pack. Take it to a qualified serviceman when service or repair is required. Incorrect reassembly may result in risk of electrical shock or fire.
- Unplug charger from outlet before attempting any maintenance or cleaning to reduce risk of electrical shock.
- Charge the battery pack in a well ventilated place. Do not cover the charger and battery while charging.
- Do not store the charger or battery packs in locations where the temperature may reach or exceed 50°C (122F). This can lead to deterioration of the batteries.
- Do not charge the battery pack when temperature is below 0°C (32F) or above 40°C (104F). This is very important for proper operation.
- Do not incinerate battery pack as it can explode in a fire.
- Do not charge battery in damp or went locations.
- Do not short across the terminals of the battery pack.
- Extremely high temperatures could cause personal injury or fire.
- Dispose of depleted batteries properly. This battery pack contains rechargeable, nickel-cadmium (NiCd) batteries which must be recycled or disposed of properly.

REMOVING EMPTY GREASE CARTRIDGE

- 1) Pull back on the follower handle until follower rod is fully extended and latched onto the locking lever.
- 2) Unscrew the grease tube assembly from the Rechargeable Grease Gun.
- 3) Press the locking lever and carefully release the follower handle to eject the empty cartridge from container tube.

INSTALLING GREASE CARTRIDGE

- 1) Pull back on the follower handle until the follower rod is fully extended and latched onto the locking lever.
- 2) Remove the plastic cap from the grease cartridge and insert cartridge into the container tube.
- 3) Remove the pull tab from the grease cartridge and screw grease tube assembly into pump assembly.
- 4) Press the locking lever to release the follower rod. Purge air from pump. See AIR PURGING instructions.

HOW TO READ THE BATTERY CAPACITY DISPLAY

The LCD display shows the battery capacity whenever the button is pressed. It has 5 segments, each one representing 20% of the full capacity, i.e. three segments lit in the LCD display indicates the battery is at 60% of its charge (See Figure 1).

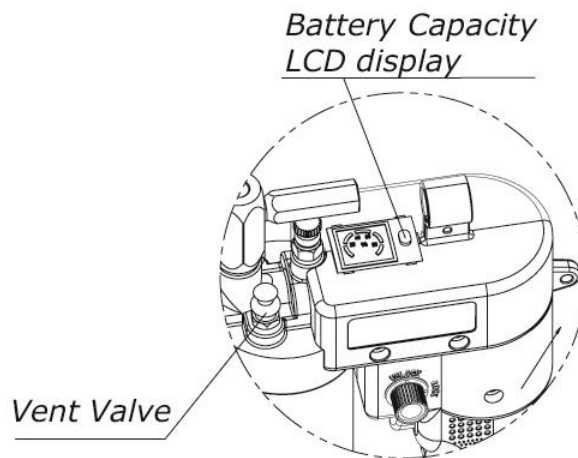


Figure 1
BATTERY CAPACITY DISPLAY

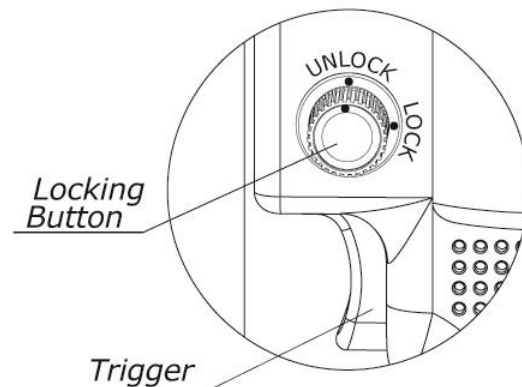


Figure 2
SELF-LOCKING TRIGGER

HOW TO USE THE SELF-LOCKING TRIGGER

There is a chance of getting the trigger pressed by children or something else when the grease gun is being transported or just not being used. The grease gun could then be accidentally activated, spilling grease all over. To avoid this, turn the button position from 'Unlock' to 'Lock' (See Figure 2).

NOTE Do not press the trigger when the button is in the 'Lock' position, this could destroy the self-locking device.

REMOVING EMPTY GREASE CARTRIDGE

- 1) Pull back on the follower handle until follower rod is fully extended and latched onto the locking lever.
- 2) Unscrew the grease tube assembly from the Rechargeable Grease Gun.
- 3) Press the locking lever and carefully release the follower handle to eject the empty cartridge from container tube.

INSTALLING GREASE CARTRIDGE

- 1) Pull back on the follower handle until the follower rod is fully extended and latched onto the locking lever.
- 2) Remove the plastic cap from the grease cartridge and insert cartridge into the container tube.
- 3) Remove the pull tab from the grease cartridge and screw grease tube assembly into pump assembly.
- 4) Press the locking lever to release the follower rod. Purge air from pump. See AIR PURGING instructions.

HOW TO READ THE BATTERY CAPACITY DISPLAY

The LCD display shows the battery capacity whenever the button is pressed. It has 5 segments, each one representing 20% of the full capacity, i.e. three segments lit in the LCD display indicates the battery is at 60% of its charge (See Figure 1).

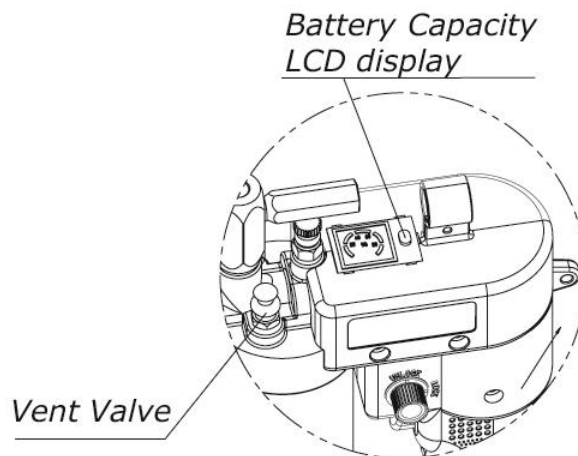


Figure 1
BATTERY CAPACITY DISPLAY

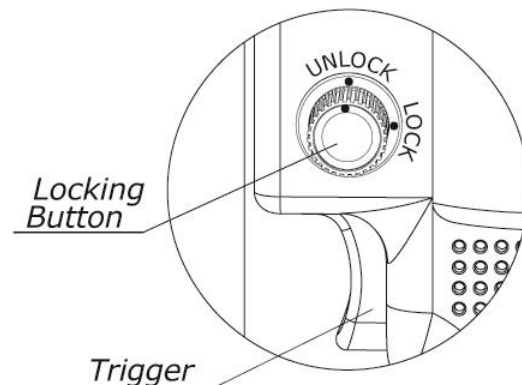


Figure 2
SELF-LOCKING TRIGGER

HOW TO USE THE SELF-LOCKING TRIGGER

There is a chance of getting the trigger pressed by children or something else when the grease gun is being transported or just not being used. The grease gun could then be accidentally activated, spilling grease all over. To avoid this, turn the button position from 'Unlock' to 'Lock' (See Figure 2).

NOTE Do not press the trigger when the button is in the 'Lock' position, this could destroy the self-locking device.

REMOVING EMPTY GREASE CARTRIDGE

- 1) Pull back on the follower handle until follower rod is fully extended and latched onto the locking lever.
- 2) Unscrew the grease tube assembly from the Rechargeable Grease Gun.
- 3) Press the locking lever and carefully release the follower handle to eject the empty cartridge from container tube.

INSTALLING GREASE CARTRIDGE

- 1) Pull back on the follower handle until the follower rod is fully extended and latched onto the locking lever.
- 2) Remove the plastic cap from the grease cartridge and insert cartridge into the container tube.
- 3) Remove the pull tab from the grease cartridge and screw grease tube assembly into pump assembly.
- 4) Press the locking lever to release the follower rod. Purge air from pump. See AIR PURGING instructions.

HOW TO READ THE BATTERY CAPACITY DISPLAY

The LCD display shows the battery capacity whenever the button is pressed. It has 5 segments, each one representing 20% of the full capacity, i.e. three segments lit in the LCD display indicates the battery is at 60% of its charge (See Figure 1).

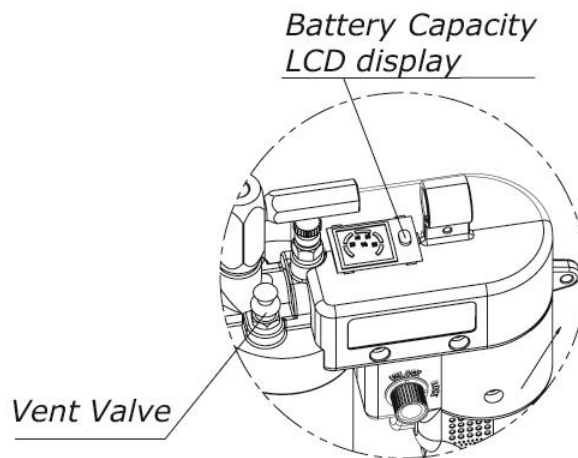


Figure 1
BATTERY CAPACITY DISPLAY

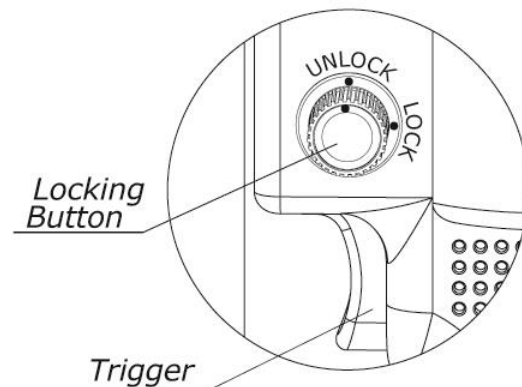


Figure 2
SELF-LOCKING TRIGGER

HOW TO USE THE SELF-LOCKING TRIGGER

There is a chance of getting the trigger pressed by children or something else when the grease gun is being transported or just not being used. The grease gun could then be accidentally activated, spilling grease all over. To avoid this, turn the button position from 'Unlock' to 'Lock' (See Figure 2).

NOTE Do not press the trigger when the button is in the 'Lock' position, this could destroy the self-locking device.

Item	Description
1	Interference Blanker
2	Motor Kit
3	Gear Assembly Kit
4	Yoke Block
5	Plunger
6	Grease Release Valve
7	Filler Nipple
8	Vent Valve
9	Circuit Breaker
10	Jiggle Switch
11	Button
12	Check Valve Kit
13	Battery Capacity Display

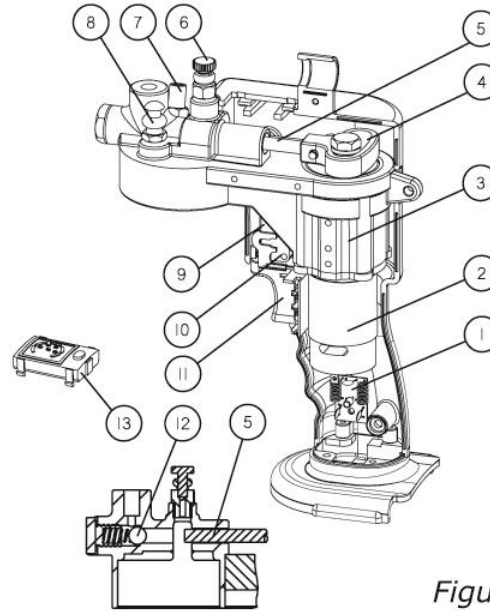


Figure 6

TROUBLESHOOTING

CONDITION	POSSIBLE CAUSE	CORRECTIVE ACTION
Motor fails to run.	<ul style="list-style-type: none"> – Battery needs recharging. – Faulty wiring to motor. 	<ul style="list-style-type: none"> – Recharge battery. – Remove battery, disassemble handle and check wiring for loose connections.
Pressure relief valve opens to discharge grease.	<ul style="list-style-type: none"> – Blocked line. – Blocked bearing. – Blocked grease fitting. 	<ul style="list-style-type: none"> – Check lines, brazing and grease fitting to remove or clean obstructions.
Grease Gun fails to dispense grease.	<ul style="list-style-type: none"> – Grease tube assembly is out of grease. – Loss of prime. – Ball check (item #12) is not functioning. (See Figure 6) 	<ul style="list-style-type: none"> – Check that the container has grease. – Repeat priming operation. – Remove item #12, clean and inspect ball seat area.
Grease Gun continues to lose prime.	<ul style="list-style-type: none"> – Air may be trapped in several locations in container after bulk filling. – Follower may be binding in grease tube assembly. 	<ul style="list-style-type: none"> – Empty grease tube assembly, refill and repeat priming operation. – Replace container (item #9). (See Figure 5)
Battery fails to take a charge.	<ul style="list-style-type: none"> – Charger may not have power. – Battery may be bad. 	<ul style="list-style-type: none"> – Check that the AC outlet or the 12V DC car socket has power. – Replace battery.