

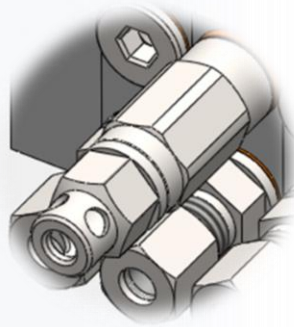
# Sensors & Monitoring Devices



**Suck and Drain Device for  
Waste Grease Collection System**



**Sensors**

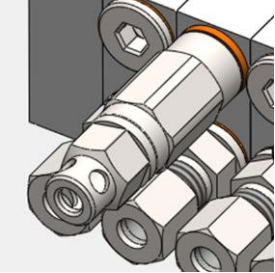


**Monitoring Device**



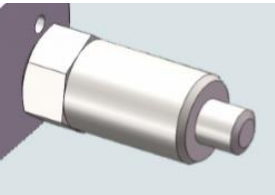
## Overview of Sensor for Grease System

### Hall Sensor (Pressure Sensor for Progressive System)



Ordering Codes	Description	For Metering's Type
2020420030	SGS-HS-PNPC	SSV/SSVA/SSVD/VPKA/VPKB
2020420040	SGS-HS-NPNC	
2020420010	SGS-HS-PNPE	
2020420020	SGS-HS-NPNE	

### Pressure Sensor for Dual Line/Single Line System



Ordering Codes	Description	For Metering's Type
2020620040	SGS-PS	LI-DLA/DLB LR-SLA

### Other Sensors for Grease System

	Ordering Codes	Description	For Pump Type
Temperature Sensor	/	SGS-TS	Progressive Pump, Single Line
Grease Level Sensor	/	SGS-GLS	Pump, Dual Line Pump

## Overview of Sensor for Fluid Grease/Oil System

	Ordering Codes	Description	For Metering's Type	For Pump Type
Temperature Sensor	/	SFGOS-TS	-	Pressurized Single Line
Grease Level Sensor	/	SFGOS-GLS	-	Pump
Pressure Sensor	/	SFGOS-PS	LRK0-SLA	-

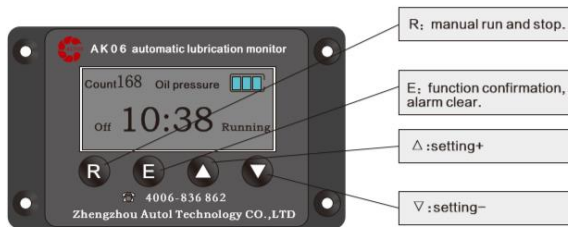
# Overview of Monitoring Devices

## Integrated Monitoring Device

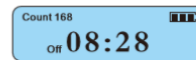
## External Monitoring Device



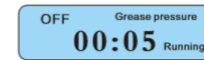
	Ordering Codes	Description	For Pump Type
Integrated Monitoring Device	/	IMD-06	Progressive Pump, Single Line Pump, Dual Line Pump
External Monitoring Device	/	EMD-04	Progressive Pump, Single Line Pump, Pressurized Single Line Pump, Dual Line Pump



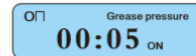
1 Off status



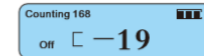
2 Oil quantity pulse not detected during operation



3 Oil quantity pulse detected during operation



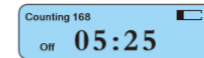
4 Low-temperature standby



5 Low level early warning status



6 Low level early warning status



r Alarm due to lack of grease  
(Alarm sends and the machine will be shut down after 6 consecutive operations, the alarm will be automatically acknowledged after the tank is fully filled)



s Alarm due to insufficient filling  
(It has no influence on system operation. Fault will be automatically cleared at the time of need normal operation)



**Important information:**

Press and hold both "▲" and "▼" for 4s and above and press the "E" to enter into the mode of setting. It is automatically locked after exiting the mode of setting. Press briefly the "E" to enter into the setting interface and press briefly in turn the "E" to select the setting items "1P, 2P, 3P and 4P". Confirmed.

- 1P: Press briefly the "▲" or "▼" to set the off time ( 1 to 30 h, customizable ) ;
  - 2P: Set the number of pulses to be detected (0 to 99 min, customizable);
  - 3P: Press briefly the "▲" or "▼" to set the operation time ( 1 to 60 min, customizable ) ;
  - 4P: Press briefly the "▲" or "▼" to set the low-temperature standby temperature (-50°C to 0°C);
- Briefly press the "E" to confirm entering into the "OFF" state.

**Special Attention!**

This monitor is designed with function against misoperation: