

A Brand from **AUTOL** Group

LUBMANN
Centralized Lubrication System



ABOUT US

Lubmann GmbH was founded by the Autol Group in Duisburg in 2015. The AUTOL Group is one of the world's leading manufacturers of centralized lubrication systems. The automatic central lubrication systems of Lubmann GmbH are suitable for a wide range of applications.

For each application we offer the suitable lubrication system from our product portfolio. Progressive central lubrication systems with disc distributors and block distributors, dual line systems, and single line systems.

From our new location in Pegnitz we serve Germany, Europe and many international customers.

We offer a comprehensive dealer network with service and sales in Germany, Europe and worldwide in the markets which are important for us.

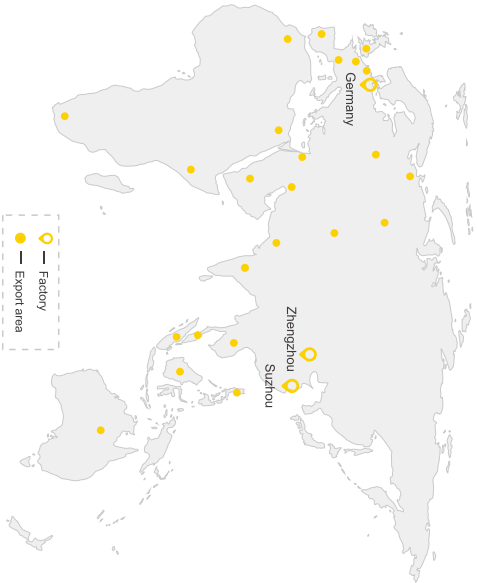
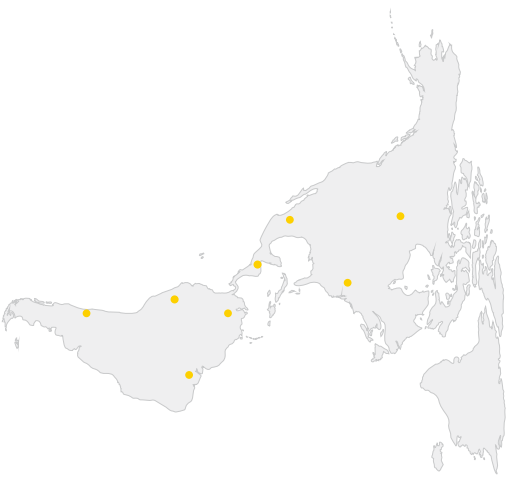


ABOUT GROUP

Both AUTOL and Lubmann systems are available through our global network of lubrication experts, offering you world-class installation and ongoing support on a local level – today and into the future.

With the power of this network, and more than 20 years of combined friction management experience, we can help you improve machine reliability, reduce maintenance, increase productivity, enhance safety and optimize manpower.

OUR BUSINESS NETWORK



Germany



Zhengzhou China



Suzhou China

Lubmann progressive centralized lubrication pump type – **ALPB, ALP81** series have been widely used in industries like wind power, mining, metallurgy, machine tools, textiles, food, ports, commercial vehicles, construction machinery, and heavy mechanical equipment, etc.

Our Lubmann automatic lubrication system lubricates all lube points as required through progressive lubrication system. It can reduce the friction resistance, reduce contact wear and decrease the friction surface temperature. Meanwhile, it plays a supporting role of anti-rust, shock absorption and sealing.



Type	Reservoir Size	Voltage Range	Max. Number of PE
------	----------------	---------------	-------------------

ALPB BYN	2/4/6/8/15/ 20 Liter	12/24V DC	4 for M22x1.5
ALPB HSC		12/24V DC, 230V AC	4 for M22x1.5

Electrical Connection Interface	Max. Working Pressure	Working Temperature Range	Lubricant
---------------------------------	-----------------------	---------------------------	-----------

1 x BYN + 1 x BD	350 bar	-35°C to +70°C	Greases up to NLGI- CI.2 No grease with solids, no oil
3 x HSC			

The **ALPB, ALP81** series pumps differ in reservoir size and control type. It can be controlled by the standard integrated controller with current version Ak06*, or externally by PLC, board computer or external controller from Lubmann.



Type	Reservoir Size	Voltage Range	Max. Number of PE
------	----------------	---------------	-------------------

ALP81 BYN	1/2 Liter	12/24V DC	3 for M22x1.5
--------------	-----------	-----------	---------------

Electrical Connection Interface	Max. Working Pressure	Working Temperature Range	Lubricant
---------------------------------	-----------------------	---------------------------	-----------

1 x BYN + 1 x BD	350 bar	-35°C to +70°C	Greases up to NLGI- CI.2 No grease with solids, no oil
---------------------	---------	-------------------	---

The **ALPE** series pump is a multi-functional electric piston pump that can be used in progressive and multi-line systems, and the two systems can also be used in combination. Compact structure and light weight are the main competitive advantages of this product.

The ALPE series pumps can be equipped with maximum 10 outlets, 2 of which can be connected to the progressive dividers such as JPQ1, SSVA or SSVD and the other 8 can be directly connected to the lube point.



Type	Reservoir Size	Voltage Range	Max. Number of PE
------	----------------	---------------	-------------------

ALPE BYN	1/2 Liter	12/24V DC	8 for M14x1.5
ALPE HSC			2 for M22x1.5

Electrical Connection Interface	Max. Working Pressure	Working Temperature Range	Lubricant
---------------------------------	-----------------------	---------------------------	-----------

1 x BYN + 1 x BD	350 bar	-35°C to +70°C	Greases up to NLGI- CI.2 No grease with solids, no oil
3 x HSC			

* Available PE for ALPB/ALP81/ALPE: 1.5/2.5/4.5 cm³/min M22x1.5
Available PE for ALPE: 0.005/0.01/0.015/0.025/0.05cm³/cy M14x1.5

The **ABDB-05** series multi-line pumps are HP multi-point pumps, which can be mounted up to 5 pump elements M22x1.5 with variant displacement, and build a progressive lubrication system with progressive dividers. ABDB-05 is widely used for mining, port, construction machinery and other industries.



Type	Reservoir Size	Ratio	Max. The Number Of Outlets	Working Temperature Range
------	----------------	-------	----------------------------	---------------------------

ABDB-05	4/8/20 Liter (PC)	70:1,300:1	5	-25°C to +70°C
---------	-------------------	------------	---	----------------

Electrical connection	Output per outlet	Lubricant
-----------------------	-------------------	-----------

multi-phase motor: 380-420 VAC/50 Hz, 440-480 VAC/60 Hz, single-phase motor: 290/500VAC/50Hz	0.075cm ³ /cy, 0.125cm ³ /cy, 0.225cm ³ /cy, 0.035cm ³ /cy~ 0.15cm ³ /cy (adjustable)	Oil: Viscosity of at least 40 mm ² /s Grease: Up to NLGI-2
--	---	---

The **ABDB-15/30** series multi-line pump can drive up to 15/30 pump elements K6 and K7, which have adjustable outputs available, and build a progressive lubrication system with progressive dividers.

ABDB-05/15/30 pumps are available with either a three-phases, multi-range motor, a single-range motor, or with a free shaft. Various gearbox ratios and volume of reservoirs in PC or steel are available. Depends on the lubricant of oil or grease, multiple level monitoring sensor or refilling adapters can be implemented.



Type	Reservoir Size	Ratio	Max. The Number Of Outlets	Working Temperature Range
------	----------------	-------	----------------------------	---------------------------

ABDB-15	8/20/ Liter (PC)	7:1(only for free shaft), 50:1,100:1, 500:1	15	-20°C to +70°C
	30/60/ 100 Liter (Steel)			
ABDB-30	30/60/ 100 Liter (Steel)		30	

Electrical connection	Output per outlet	Lubricant
-----------------------	-------------------	-----------

multi-phase motor: 380-420 VAC/50 Hz, 440-480 VAC/60 Hz, single-phase motor: 290/500VAC/50Hz	K6 0.033 cm ³ /cy ~ 0.16 cm ³ /cy,	Oil: Viscosity of at least 40 mm ² /s Grease: Up to NLGI-2
	K7 0.045 cm ³ /cy ~ 0.23 cm ³ /cy	

The **ADPB** series dual line pump is a new generation of centralized lubrication pump, which has been developed after long-term market research and technological innovation. Through zone control, the pump meets the requests of dynamic lubricant volume for multiple lubrication points in different equipment's locations.

This on-demand grease supply mode is very friendly to large mobile engineering machinery equipment.



Type	Reservoir Size	Voltage Range	Max. The Number of outlets
------	----------------	---------------	----------------------------

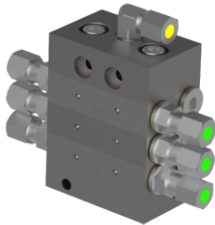
ADPB	20/40/60 Liter (Steel)	24V DC	2
------	------------------------	--------	---

Working Temperature Range	Max. Working Pressure	Output per outlet	Lubricant
---------------------------	-----------------------	-------------------	-----------

-35°C to +70°C	350 bar	20cm ³ /min	Greases up to NLGI- CI.2 No grease with solids, no oil
----------------	---------	------------------------	---

The progressive **JPQ1** dividers are manufactured in a variable element construction, which offers the advantage that the divider can be extended or shortened randomly according to the amount of lubrication points. Due to this element construction there is also the possibility of constructing an overall progressive divider from individual divider elements with different outputs per piston stroke.

The divider sensor can be used for the monitoring of the dividers. In the case of manually operated pumps a virtually insurmountable counter pressure occurs during the blockage.



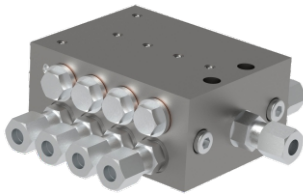
Type	Min. Outlets	Max. Outlets	Delivery Qty. per outlet for Mid Element (cm ³ /Stroke)
------	--------------	--------------	--

JPQ	6	22	0.08
			0.16
			0.24
			0.32

Max. Working Pressure	Working Temperature Range	Lubricant
-----------------------	---------------------------	-----------

300 bar	-35°C to +70°C	Greases up to NLGI- CI.2 No grease with solids, no oil
---------	----------------	---

The **SSVA** is a compact block-type progressive divider with fixed output per outlet. For direct mounting of fittings with no need of any sealing in between. Available with pin indicator for visual divider monitoring or with Hall sensor for electrical divider monitoring.



Type	Min. Outlets	Max. Outlets	Delivery Qty. per outlet (cm ³ /Stroke)
------	--------------	--------------	--

SSVA	6	22	0.2
------	---	----	-----

Max. Working Pressure	Working Temperature Range	Lubricant
-----------------------	---------------------------	-----------

350 bar	-40°C to +70°C	Greases up to NLGI- CI.2 No grease with solids, no oil
---------	----------------	---

The **ALP01** single point lubricator has been widely used in industries like wind power, mining, metallurgy, machine tools, textiles, food, etc. as one of the best price performance rate choice.

ALP01 can lubricate 1 lube point directly or multiple lube points through a max. 8 outlets JPQ1 or SSVA divider. It can reduce the friction resistance, reduce contact wear and decrease the friction surface temperature. Meanwhile, it plays a important role of anti rust, shock absorption and sealing.



Type	Reservoir Size	Operating Voltage and driven by	Max. Pump Outlet
------	----------------	---------------------------------	------------------

ALP01	120/250/500 ml	3.6V DC, battery	1
-------	----------------	------------------	---

Max. outlets of the divider	Max. Working Pressure	Working Temperature Range	Lubricant
-----------------------------	-----------------------	---------------------------	-----------

8	40 bar	-20°C to +60°C	Greases up to NLGI- CI.2 No grease with solids, no oil
---	--------	----------------	---

The **ADK-06** control unit is the heart of a automatic lubrication system. With the integrated PLC, the ADK-06 could control each part of the centralized lubrication system. The operating status of the system is able to be monitored in real time through the touch screen. During the automatic operation of the equipment, when grease is supplied to each lube point, the touch screen on the control cabinet (PLC) will display the in-real working time and amount lubricated amount of the lubricant.



Type	Power supply	Control mode	Monitoring
------	--------------	--------------	------------

ADK-06	AC380V 50Hz three-phase	Automatic / Manual	Level monitoring, divider monitoring
--------	-------------------------	--------------------	--------------------------------------

Communication method	Pause time setting range	Working time setting range
----------------------	--------------------------	----------------------------

Rs485	0h 1min~999h 59min	1~255 seconds
-------	--------------------	---------------

The **ADZ/ADJ-0315** electric grease refilling pump has a lot of advantages such as easy operated, labor & time saving, no waste of grease and avoiding environment pollution.

After the inserting the pump directly into the barrel, which is included in the pump kit with max. 18 kg reservoir, the pump could complete the grease filling process when power is on.



Type	Rated flow	Maximum pressure	Operating voltage
ADZ-0315	300cm ³ /min	350bar	230V AC
ADJ-0315			24V DC

Operating temperature	Weight	Reservoir size	Lubricant
-20 °C~+70 °C	<8kg	D:275~295mm Maximum Depth: 320mm	Greases up to NLGI- CI.2

LUBMANN

Centralized Lubrication System



Addr.: Kleiner Johannes 21, D-91257,
Pegnitz, Germany

Tel.: +49 9241 80 89 87 00

Email: info@lubmann-gmbh.de

Website: www.lubmann-gmbh.de

